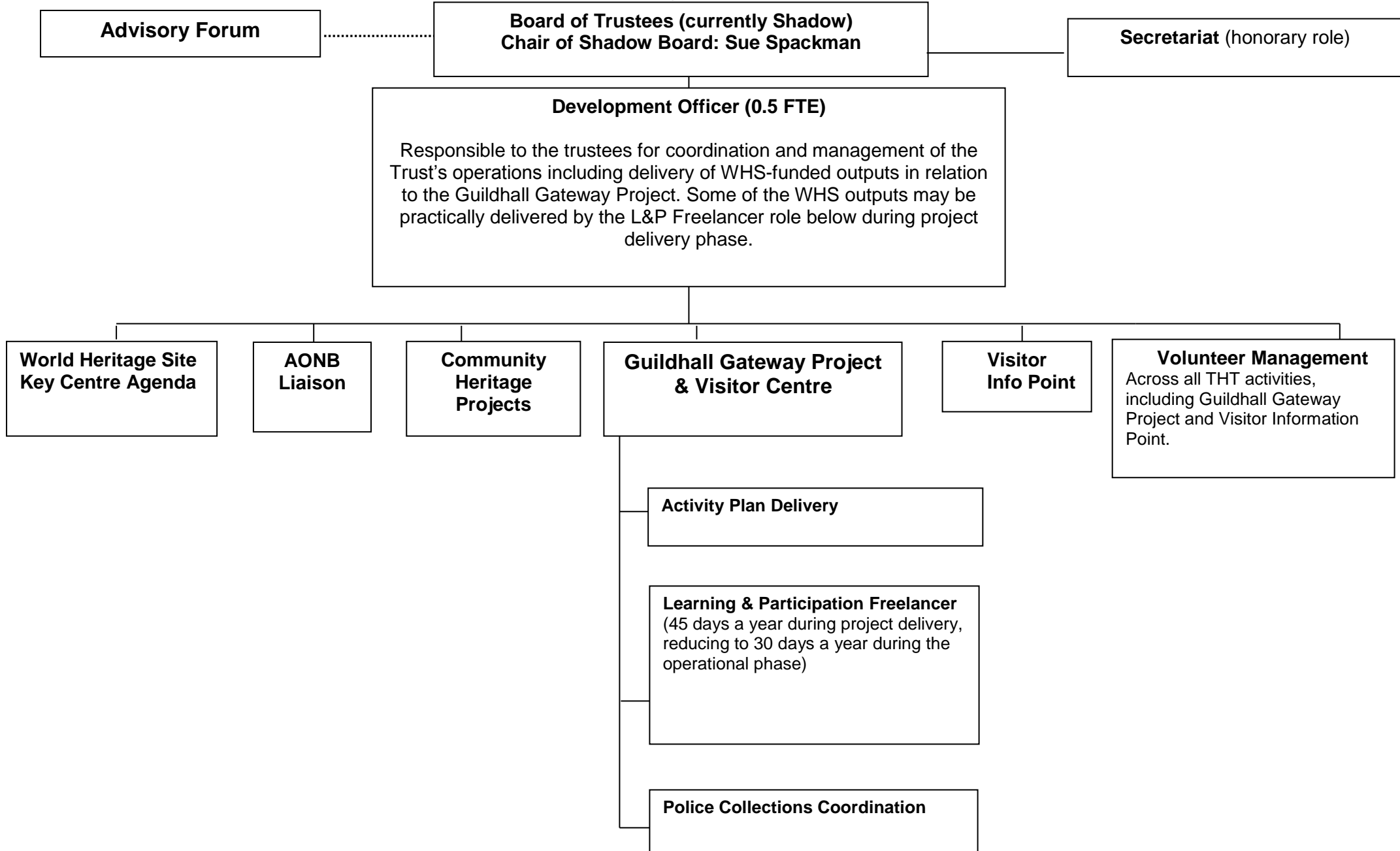


# THT Proposed Organisational Structure



**Advisory Forum**

**Board of Trustees (currently Shadow)**  
Chair of Shadow Board: Sue Spackman

**Secretariat (honorary role)**

**Development Officer (0.5 FTE)**

Responsible to the trustees for coordination and management of the Trust's operations including delivery of WHS-funded outputs in relation to the Guildhall Gateway Project. Some of the WHS outputs may be practically delivered by the L&P Freelancer role below during project delivery phase.

**World Heritage Site Key Centre Agenda**

**AONB Liaison**

**Community Heritage Projects**

**Guildhall Gateway Project & Visitor Centre**

**Visitor Info Point**

**Volunteer Management**  
Across all THT activities, including Guildhall Gateway Project and Visitor Information Point.

**Activity Plan Delivery**

**Learning & Participation Freelancer**  
(45 days a year during project delivery, reducing to 30 days a year during the operational phase)

**Police Collections Coordination**